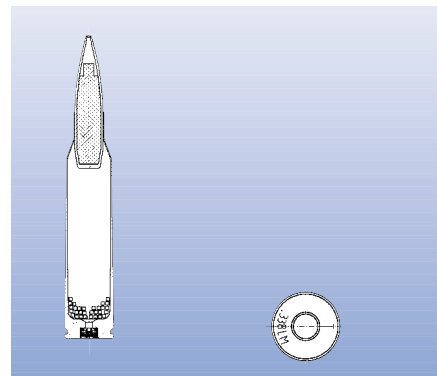




- Compatible with all .338 Lapua Mag. bolt action weapons
- Unique solution of excellent accuracy for training and competition
- Same trajectory as AP/Ball



Application:

The HPBT projectile cartridge of the SWISS P family for general use, serious training and for situations when precision shots are required for targets up to longest distances.

Cartridge Data

• weight:	44.5 g
• case material:	CuZn - alloy
• primer:	large rifle magnum
• propellant:	single base
• projectile:	HPBT
• ballistic coefficient C1:	0.587 (ICAO)
• projectile weight:	250 grs / 16.2 g
• jacket material:	CuZn - alloy
• core material:	PbSb - alloy
• dimensions:	in accordance with CIP

Technical Data

• temperature range:	between -54°C and +52°C
• muzzle velocity:	Min. 830 m/s
• mean chamber pressure:	Max. 4200 bar
• accuracy 100 m:	100% radius 15 mm, 10 rounds
• accuracy 500 m:	100% radius 75 mm, 10 rounds

Packaging and Marking

In accordance with customers' requirements